

Book Launch: *Global Perspectives on Workers' and Labour Organizations*

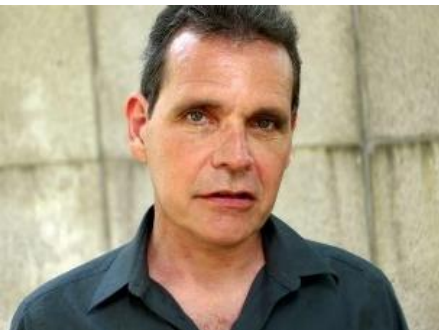
Maurizio Atzeni and Immanuel Ness, editors

25 June 2018 Monday, 2-4pm, GH405, The Hong Kong Polytechnic University

The meeting will consist in a round table featuring the speakers, and allowing time for questions and comments from the audience. The book is available online at Palgrave.



Dr Maurizio Atzeni is a researcher at the Centre for Labour Relations, Argentinian National Research Council (CEIL/CONICET) based in Buenos Aires, having previously held positions at Loughborough and De Montfort Universities in the UK. He has published extensively on labour-related issues. He is the author of *Workplace Conflict: mobilization and solidarity in Argentina* (Palgrave 2010) and the editor of *Workers and Labour in a Globalised capitalism* (Macmillan 2014), a book currently in translation to Chinese and Spanish that analyses labour from an interdisciplinary perspective. Maurizio serves on the editorial board of *Work, Employment and Society* and of the *Journal of Labor and Society*.



Dr Immanuel Ness is Professor of Political Science at Brooklyn College, City University of New York, and Senior Research Associate, Centre for Social Change, University of Johannesburg. He is author of *Southern Insurgency* (Pluto, 2015), Co-Editor, with Jake Alimahomd-Wilson, *Choke Points: Logistics Workers Disrupting the Global Supply Chain* (Pluto 2018), and Co-Editor, *Oxford Handbook of Migration Crises* (Oxford University Press, forthcoming 2018). He is author of *Guest Workers and Resistance to U.S. Corporate Despotism* (Univ. of Illinois Press, 2011), and other works on migration, labor movements and political organizations, social change, and imperialism. He is co-editor, with Zak Cope, of the quarterly periodical, *Journal of Labor and Society*.



Discussant

Dr Eric Florence

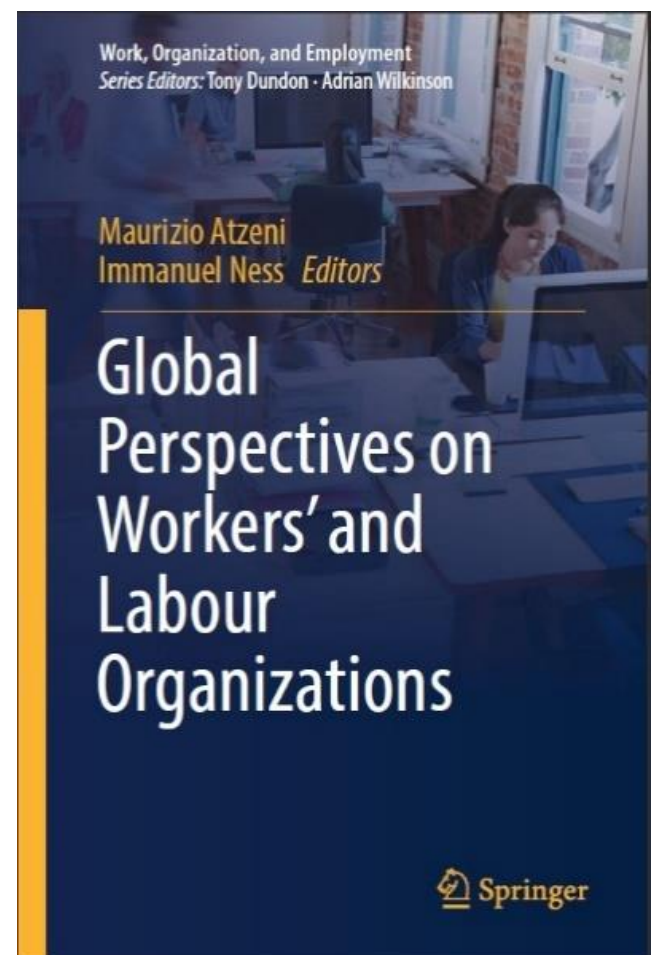
Director, French Centre for Research on Contemporary China



Convenor

Dr Jenny Chan

Assistant Professor, The Hong Kong Polytechnic University



Scan and Register



中國研究及發展網絡 香港理工大學應用社會科學系
China Research and Development Network
The Hong Kong Polytechnic University | Department of Applied Social Sciences

Inquiry: Ricky Email: nam-lau.fung@polyu.edu.hk; Phone: 2766 7725
China Research and Development Network, APSS, PolyU

cefc
Centre d'études français
sur la Chine contemporaine
法國現代中國研究中心